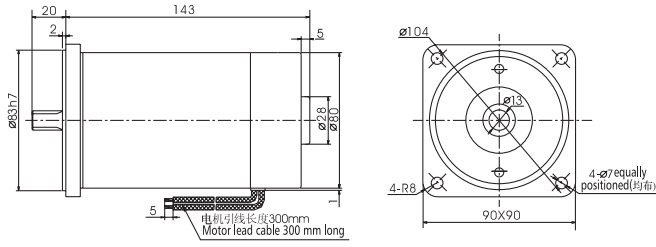


电机外形尺寸 Motor Overall Dimension



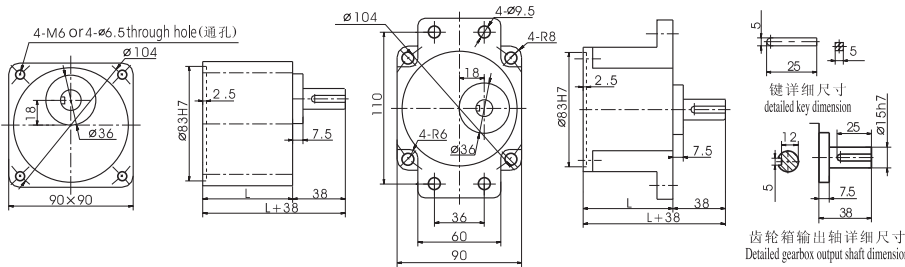
直流电机 DC Motor 60-120W



电机特性表 List of Motor Characteristics

型号 Model	电压 Voltage V	功率 Power W	空载参数 No-load Parameters		负载参数 Load Parameters			电刷寿命 Brush Life H	电机重量 Motor Weight kg	备注 Remarks
			转速 Speed RPM	电流 Current A	转速 Speed RPM	力矩 Torque kg.cm	电流 Current A			
Z5D60-12	12	60	3000	2.0	2600	2.3	9.0	2000	2.2	
Z5D60-24	24	60	3100	1.0	2800	2.1	3.5	2000	2.2	
Z5D60-90	90	60	3100	0.3	2900	2.0	1.0	2000	2.2	
Z5D90-12	12	90	3100	2.0	2600	3.4	12.0	2000	2.2	
Z5D90-24	24	90	3300	1.0	2800	3.2	5.0	2000	2.2	
Z5D90-90	90	90	3000	0.3	2800	3.2	1.4	2000	2.2	
Z5D120-12	12	120	3100	2.0	2500	4.7	15.0	2000	2.2	
Z5D120-24	24	120	3200	1.2	2600	4.5	7.0	2000	2.2	
Z5D120-90	90	120	3000	0.3	2600	4.5	2.0	2000	2.2	

齿轮箱外形尺寸 Overall Dimension of Gearbox



速比 Reduction Ratio	尺寸 L(mm)	质量(kg)
5GU3K-GU9K	65	1.21
5GU10K-GU18K	65	1.30
5GU20K-GU75K	65	1.40
5GU90K-GU200K	65	1.45

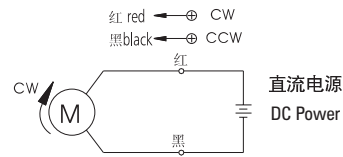
齿轮箱允许力矩 Allowable Torque on Gearbox

齿轮箱型式 Model of Gearbox: 5GU □ K

型号 Mode	减速比 Reduction Ratio		3	3.6	5	6	7.5	9	10	12.5	15	18	20	25	30	36	40	50	60
Z5D90-24	输出轴转速 Output Shaft Speed	r/min	1100	916	660	550	440	366	330	264	220	183	165	132	110	91	82	66	55
	允许力矩 Allowable Torque	N.m	0.64	0.76	1.05	1.27	1.58	1.90	1.90	2.38	2.85	3.42	3.44	4.30	5.16	6.19	6.88	8.60	10.31
		kgf.cm	6.53	7.75	10.76	12.92	16.12	19.37	19.40	24.25	29.10	34.92	35.08	43.85	52.62	63.15	70.16	87.70	105.24

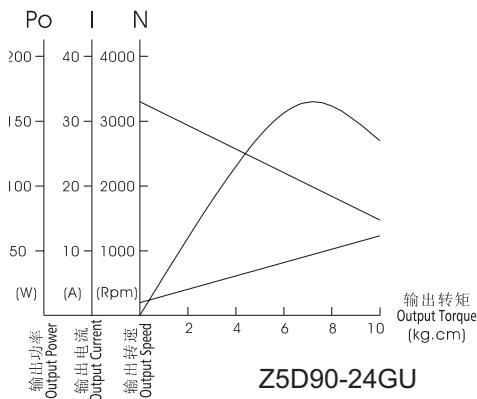
齿轮箱型式 Model of Gearbox: 5GU □ K

型号 Mode	减速比 Reduction Ratio		75	90	100	120	150	180	200
Z5D90-24	输出轴转速 Output Shaft Speed	r/min	44	36	33	27	22	18	16
	允许力矩 Allowable Torque	N.m	12.89	13.83	15.37	18.44	19.60	19.60	19.60
		kgf.cm	131.56	141.12	156.80	188.17	200.0	200.0	200.0



电机接线图 Wiring Diagram of Motor

电机特性曲线 Characteristic Curve of Motor



光电机出轴尺寸 Bare Motor Output Shaft Dimension

光电机 Motor	齿轴 Gear Shaft Z5D90- □ GU	铣扁 Flat type Z5D90- □ A	光轴 Bare Shaft Z5D90- □ A1
出轴型式 及尺寸 Output Shaft Type and Dimension			