

## 订货附件 Order accessory

●专用于电机、减速机安装的底座,是能适应高输出功率电机、减速机等要求的高强度类型。安装底座中开有螺孔,当需要将电机与减速机组装后进行安装时,请使用附带在减速机中的螺丝进行安装。

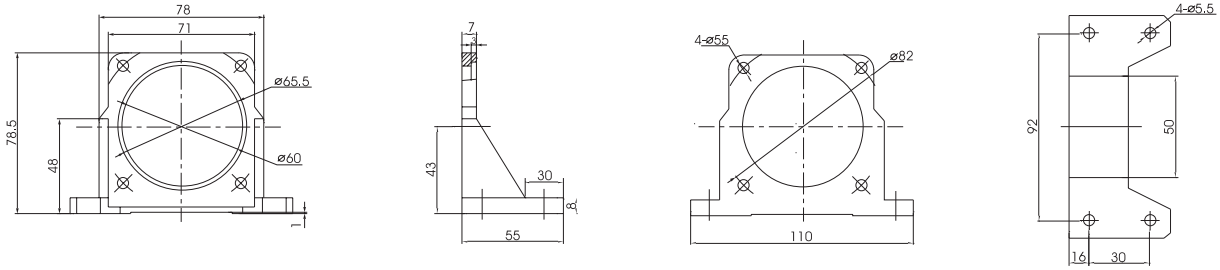
●安装电机单体时,请另外准备安装螺丝。(当需要安装端子箱时,端子箱尺寸参照下图)

●The high strength mounting base of motor and reducer is suitable to the motor and reducer with high output power. Its screw holes are pre-drilled on the mounting base. Always use the screws supplied together with the reducer in erection of the assembled motor and reducer set.

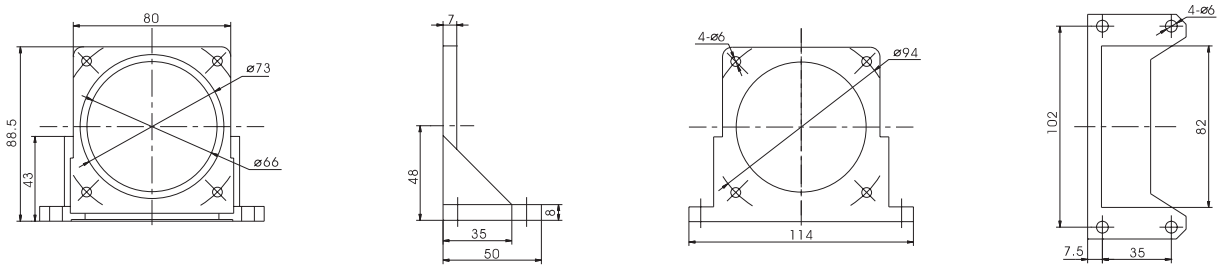
●The user himself should prepare the screws if the motor is erected separately. (For erection of terminal box, refer to the following dimension of the terminal box.)



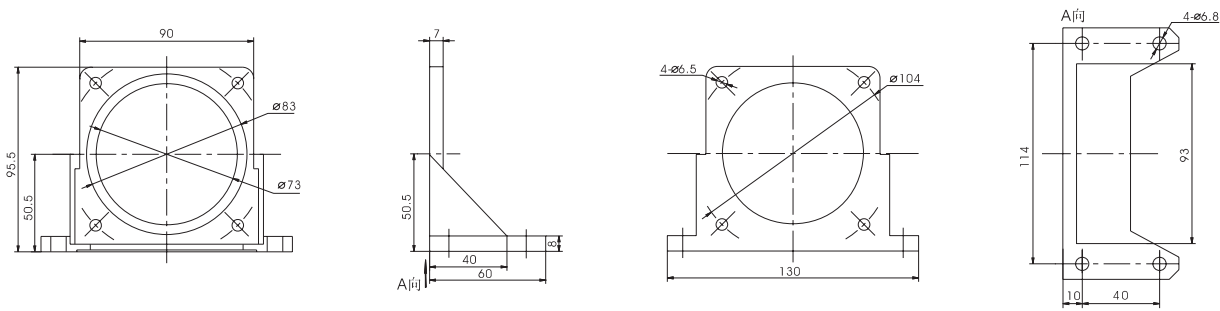
## 安装尺寸 70mm 专用 For erection dimension 70mm only



## 安装尺寸 80mm 专用 For erection dimension 80mm only



## 安装尺寸 90mm 专用 For erection dimension 90mm only



## 端子箱尺寸 Terminal Box Dimension

