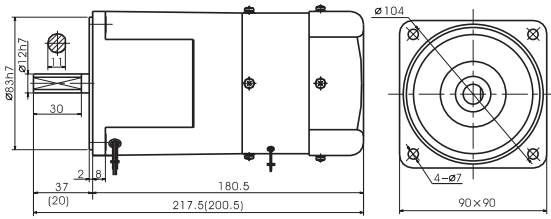


电机外形尺寸 Motor Overall Dimension

刹车调速电机 Brake Speed Adjustable Motor **60W**



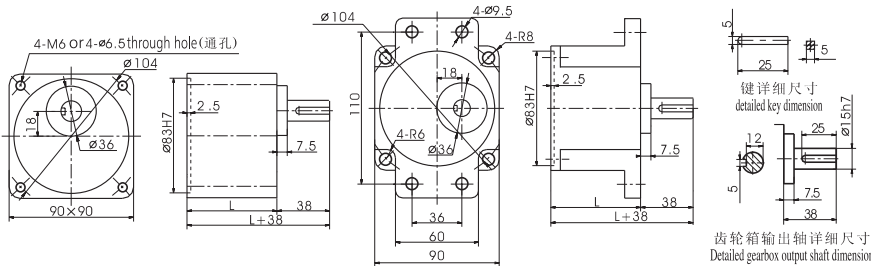
●其中()数字系小齿轮轴电机的数值。●The value in the () is the value of small gear shaft motor.

电机特性表 List of Motor Characteristics

| 电机型号 Model of Motor | | 出力 Output | 电压 Voltage | 频率 Frequency | 极数 Poles | 额定时间 Duty | 调速范围 旋转速度 RPM | 允许力矩 Allowable Torque | | | | 起动转矩 Starting Torque | | 电容容量 / 耐压 Capacitor/Ve |
|------------------------|--------------------------------|--------------|---------------|-----------------|-------------|--------------|---------------------|-----------------------|--------|-----------|--------|-------------------------|--------|---------------------------|
| 光电机 Motor | 带齿轴电机 Motor with gear shaft | W | V | Hz | P | | r/min | 1200r/min 时 | | 90r/min 时 | | N.m | kgf.cm | μF/VAC |
| | | | | | | | | N.m | kgf.cm | N.m | kgf.cm | | | |
| 5RK60RA-AMF | 5RK60RGU-AMF | 60 | 1ph110 | 50 | 4 | 30Min | 90~1350 | 0.53 | 5.30 | 0.15 | 1.50 | 0.45 | 4.50 | 18.0/250 |
| 5RK60RA-CMF | 5RK60RGU-CMF | 60 | 1ph220 | 50 | 4 | 30Min | 90~1350 | 0.53 | 5.30 | 0.15 | 1.50 | 0.45 | 4.50 | 4.5/450 |

●使用电压不同, 电容容量也不相同。故应和使用电压相对应, 正确使用。●不能正确使用是造成故障的主要原因。订货时, 在确认使用电压后, 选择正确的型号进行订货。
 ●The capacitor capacitance will be different under different voltage. A correct capacitor capacitance is required to match the applied voltage. ●Wrong capacitor capacitance is the cause of trouble. You must confirm a correct voltage and select a correct model when your purchase order is placed.

齿轮箱外形尺寸 Overall Dimension of Gearbox



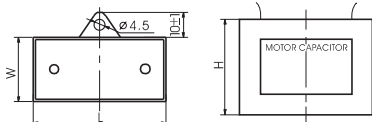
| 速比 Reduction Ratio | 尺寸 L(mm) | 质量(kg) |
|--------------------|----------|--------|
| 5GU3K-GU9K | 65 | 1.21 |
| 5GU10K-GU18K | | 1.30 |
| 5GU20K-GU75K | | 1.40 |
| 5GU90K-GU200K | | 1.45 |
| 电机 Motor | | 2.65 |

齿轮箱允许力矩 Allowable Torque on Gearbox

齿轮箱型式 Model of Gearbox: 5GU □ K

| 频率 Frequency | 减速比 Reduction Ratio | | 3 | 3.6 | 5 | 6 | 7.5 | 9 | 10 | 12.5 | 15 | 18 | 20 | 25 | 30 | 36 | 40 | 50 | 60 | 75 | 90 | 100 | 120 | 150 |
|--------------|-----------------------------|--------|------|------|------|------|------|------|------|------|------|------|------|------|------|------|------|------|------|------|------|------|------|------|
| 50Hz | 输出轴转速 Output Shaft Speed | r/min | 500 | 417 | 300 | 250 | 200 | 166 | 150 | 120 | 100 | 83 | 75 | 60 | 50 | 41 | 37 | 30 | 25 | 20 | 16 | 15 | 12 | 10 |
| | 允许力矩 Allowable Torque | N.m | 1.03 | 1.24 | 1.72 | 2.6 | 2.58 | 3.10 | 3.10 | 3.88 | 4.65 | 5.38 | 5.60 | 7.01 | 8.41 | 10.1 | 11.2 | 14.0 | 16.8 | 19.6 | 19.6 | 19.6 | 19.6 | 19.6 |
| 60Hz | 输出轴转速 Output Shaft Speed | r/min | 600 | 500 | 360 | 300 | 240 | 200 | 180 | 144 | 120 | 100 | 90 | 72 | 60 | 50 | 45 | 36 | 30 | 24 | 20 | 18 | 15 | 12 |
| | 允许力矩 Allowable Torque | N.m | 0.9 | 1.08 | 1.50 | 1.80 | 2.23 | 2.70 | 2.70 | 3.38 | 4.05 | 4.88 | 6.10 | 7.33 | 8.79 | 9.76 | 12.2 | 14.6 | 18.3 | 19.6 | 19.6 | 19.6 | 19.6 | 19.6 |
| | | kgf.cm | 9.18 | 11.0 | 15.3 | 18.4 | 23.0 | 27.6 | 27.6 | 34.5 | 41.3 | 49.5 | 62.2 | 74.7 | 90.0 | 99.8 | 124 | 149 | 187 | 200 | 200 | 200 | 200 | 200 |

电容器 Capacitor



| 电容容量 μF capacity μF 允许偏差 ± 5% | 耐压 Voltage | 长 L ± 1 | 宽 W ± 1 | 高 H ± 1 | 类型 Type |
|-------------------------------------|---------------|------------|------------|------------|------------|
| | V | mm | mm | mm | |
| 6.0 | 450 | 47 | 26 | 38 | 引线式 |
| 25.0 | 250 | 68 | 32 | 56 | Down-lead |

齿轮箱型式 Model of Gearbox: 5GU □ K

| 频率 Frequency | 减速比 Reduction Ratio | | 180 | 200 |
|--------------|-----------------------------|--------|------|------|
| 50Hz | 输出轴转速 Output Shaft Speed | r/min | 8 | 7.5 |
| | 允许力矩 Allowable Torque | N.m | 19.6 | 19.6 |
| 60Hz | 输出轴转速 Output Shaft Speed | r/min | 10 | 9 |
| | 允许力矩 Allowable Torque | N.m | 19.6 | 19.6 |
| | | kgf.cm | 200 | 200 |