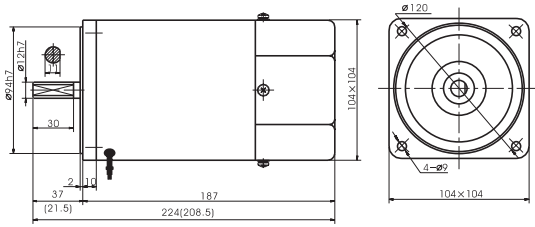


电机外形尺寸 Motor Overall Dimension

调速电机 Speed Adjustable Motor **140W**



●其中()数字系小齿轮轴电机的数值。●The value in the () is the value of small gear shaft motor.

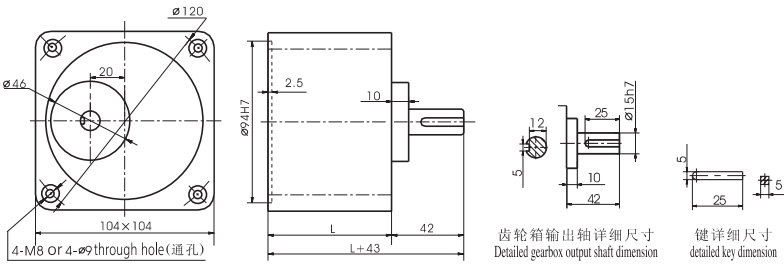


电机特性表 List of Motor Characteristics

电机型号 Model of Motor		出力 Output	电压 Voltage	频率 Frequency	极数 Poles	额定时间 Duty	调速范围 旋转速度 RPM	允许力矩 Allowable Torque				起动转矩 Starting Torque		电容量/耐压 Capacitor/Ve
光电机 Motor	带齿轴电机 Motor with gear shaft	W	V	Hz	P			1200r/min 时	90r/min 时		N.m	kgf.cm	N.m	
6IK140RA-AF	6IK140RGU-AF	140	1ph110	50	4	连续 CONT	90~1350	0.85	8.50	0.45	4.50	0.62	6.20	30.0/250
6IK140RA-CF	6IK140RGU-CF	140	1ph220	50	4	连续 CONT	90~1350	0.85	8.50	0.45	4.50	0.68	6.80	10.0/450

●使用电压不同，电容量也不相同。故应与使用电压相对应，正确使用。●不能正确使用是造成故障的主要原因。订货时，在确认使用电压后，选择正确的型号进行订货。
 ●The capacitor capacitance will be different under different voltage. A correct capacitor capacitance is required to match the applied voltage. ●Wrong capacitor capacitance is the cause of trouble. You must confirm a correct voltage and select a correct model when your purchase order is placed.

齿轮箱外形尺寸 Overall Dimension of Gearbox



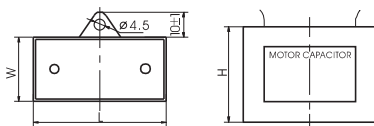
齿轮箱 Gearbox	速比 Reduction Ratio	尺寸 L(mm)	质量(kg)
电机 Motor	6GU3K-GU9K	72	1.87
	6GU10K-GU18K		2.10
	6GU20K-GU200K		2.75
电机 Motor			5.05

齿轮箱允许力矩 Allowable Torque on Gearbox

齿轮箱型式 Model of Gearbox: 6GU □ K

频率 Frequency	减速比 Reduction Ratio		3	3.6	5	6	7.5	9	10	12.5	15	18	20	25	30	36	40	50	60	75	90	100	120	150
50Hz	输出轴转速 Output Shaft Speed	r/min	500	417	300	250	200	166	150	120	100	83	75	60	50	41	37	30	25	20	16	15	12	10
	允许力矩 Allowable Torque	N.m	2.36	2.83	3.93	4.71	5.89	7.07	7.07	8.85	10.6	12.7	12.7	16.0	19.2	23.0	25.6	32.0	38.4	39.2	39.2	39.2	39.2	39.2
60Hz	输出轴转速 Output Shaft Speed	r/min	600	500	360	300	240	200	180	144	120	100	90	72	60	50	45	36	30	24	20	18	15	12
	允许力矩 Allowable Torque	N.m	2.03	2.44	3.39	4.06	5.08	6.09	6.09	7.60	9.15	11.0	11.0	13.8	16.6	19.9	22.1	27.6	33.1	39.2	39.2	39.2	39.2	39.2
		kgf.cm	20.7	24.9	34.6	41.2	51.8	62.1	62.1	77.6	93.4	112	112	141	169	203	226	282	338	400	400	400	400	400

电容器 Capacitor



电容量 μF capacity μF	耐压 Voltage	长 L±1	宽 W±1	高 H±1	类型 Type
允许偏差 ± 5% Allowable Deviation ± 5%	V	mm	mm	mm	引线式
10.0	450	47	26	38	
30.0	250	68	32	56	Down-lead

齿轮箱型式 Model of Gearbox: 6GU □ K

频率 Frequency	减速比 Reduction Ratio		180	200
50Hz	输出轴转速 Output Shaft Speed	r/min	8	7.5
	允许力矩 Allowable Torque	N.m	39.2	39.2
60Hz	输出轴转速 Output Shaft Speed	r/min	10	9
	允许力矩 Allowable Torque	N.m	39.2	39.2
		kgf.cm	400	400