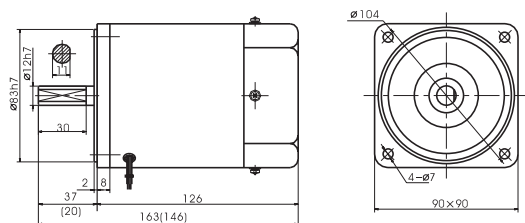


电机外形尺寸 Motor Overall Dimension

感应电机 Induction Motor 60W



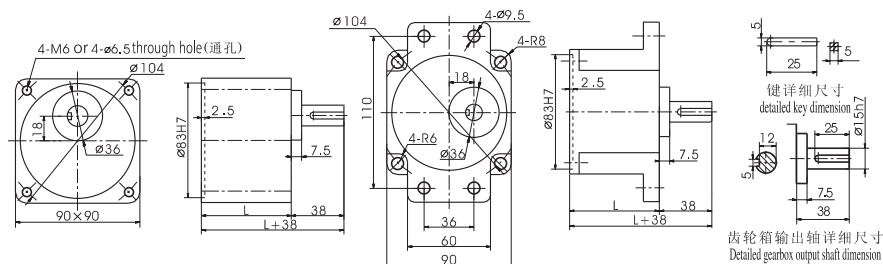
●其中()数字系小齿轮轴电机的数值。●The value in the () is the value of small gear shaft motor.

电机特性表 List of Motor Characteristics

| 电机型号 Model of Motor | | 出力 Output | 电压 Voltage | 频率 Frequency | 极数 Poles | 额定时间 Duty | 额定 Rated | | | 起动转矩 Starting Torque | | 电容容量 / 耐压 Capacitor/Ve | |
|------------------------|--------------------------------|--------------|---------------|-----------------|-------------|--------------|-------------------|-----------------|----------------------------|-------------------------|--------|---------------------------|----------|
| 光电机 Motor | 带齿轴电机 Motor with gear shaft | W | V | Hz | P | | 转速 Speed r/min | 电流 Current A | 力矩 Torque N.m kgf.cm | N.m | kgf.cm | μF/VAC | |
| 5IK60A-AF | 5IK60GU-AF | 60 | 1ph110 | 50 | 4 | 连续 CONT | 1350 | 0.98 | 0.44 | 4.40 | 0.38 | 3.75 | 15.0/250 |
| 5IK60A-CF | 5IK60GU-CF | 60 | 1ph220 | 50 | 4 | 连续 CONT | 1350 | 0.52 | 0.44 | 4.40 | 0.40 | 4.00 | 4.0/450 |
| 5IK60A-SF | 5IK60GU-SF | 60 | 3ph220 | 50 | 4 | 连续 CONT | 1350 | 0.49 | 0.46 | 4.55 | 1.70 | 17.0 | / |
| 5IK60A-Ss:F | 5IK60GU-Ss:F | 60 | 3ph380 | 50 | 4 | 连续 CONT | 1350 | 0.28 | 0.46 | 4.55 | 1.70 | 17.0 | / |

●使用电压不同，电容容量也不相同。故应与使用电压相对应，正确使用。●不能正确使用是造成故障的主要原因。订货时，在确认使用电压后，选择正确的型号进行订货。
●The capacitor capacitance will be different under different voltage. A correct capacitor capacitance is required to match the applied voltage. ●Wrong capacitor capacitance is the cause of trouble. You must confirm a correct voltage and select a correct model when your purchase order is placed.

齿轮箱外形尺寸 Overall Dimension of Gearbox



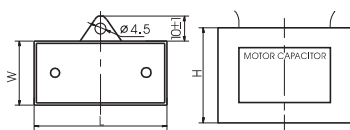
| | 速比 Reduction Ratio | 尺寸 L(mm) | 质量(kg) |
|----------------|--------------------|----------|--------|
| 齿轮箱 Gearbox | 5GU3K-GU9K | 65 | 1.21 |
| | 5GU10K-GU18K | | 1.30 |
| | 5GU20K-GU75K | | 1.40 |
| 5GU90K-GU200K | | | 1.45 |
| 电机 Motor | | | 2.40 |

齿轮箱允许力矩 Allowable Torque on Gearbox

齿轮箱型式 Model of Gearbox: 5GU □ K

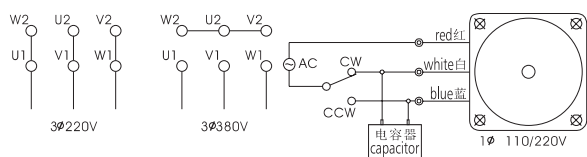
| 频率 Frequency | 减速比 Reduction Ratio | | 3 | 3.6 | 5 | 6 | 7.5 | 9 | 10 | 12.5 | 15 | 18 | 20 | 25 | 30 | 36 | 40 | 50 | 60 | 75 | 90 | 100 | 120 | 150 |
|--------------|-----------------------------|--------|------|------|------|------|------|------|------|------|------|------|------|------|------|------|------|------|------|------|------|------|------|------|
| 50Hz | 输出轴转速 Output Shaft Speed | r/min | 500 | 417 | 300 | 250 | 200 | 166 | 150 | 120 | 100 | 83 | 75 | 60 | 50 | 41 | 37 | 30 | 25 | 20 | 16 | 15 | 12 | 10 |
| | 允许力矩 Allowable Torque | N.m | 1.03 | 1.24 | 1.72 | 2.6 | 2.58 | 3.10 | 3.10 | 3.88 | 4.65 | 5.38 | 5.60 | 7.01 | 8.41 | 10.1 | 11.2 | 14.0 | 16.8 | 19.6 | 19.6 | 19.6 | 19.6 | 19.6 |
| | | kgf.cm | 10.5 | 12.7 | 17.6 | 21.0 | 26.3 | 31.6 | 31.6 | 39.6 | 47.4 | 54.9 | 57.1 | 71.6 | 85.8 | 103 | 114 | 143 | 171 | 200 | 200 | 200 | 200 | 200 |
| 60Hz | 输出轴转速 Output Shaft Speed | r/min | 600 | 500 | 360 | 300 | 240 | 200 | 180 | 144 | 120 | 100 | 90 | 72 | 60 | 50 | 45 | 36 | 30 | 24 | 20 | 18 | 15 | 12 |
| | 允许力矩 Allowable Torque | N.m | 0.9 | 1.08 | 1.50 | 1.80 | 2.23 | 2.70 | 2.70 | 3.38 | 4.05 | 4.88 | 4.88 | 6.10 | 7.33 | 8.79 | 9.76 | 12.2 | 14.6 | 18.3 | 19.6 | 19.6 | 19.6 | 19.6 |
| | | kgf.cm | 9.18 | 11.0 | 15.3 | 18.4 | 23.0 | 27.6 | 27.6 | 34.5 | 41.3 | 49.5 | 49.5 | 62.2 | 74.7 | 90.0 | 99.8 | 124 | 149 | 187 | 200 | 200 | 200 | 200 |

电容器 Capacitor



| 电容容量 μF capacity μF | 耐压 Voltage | 长 L±1 | 宽 W±1 | 高 H±1 | 类型 Type |
|------------------------|---------------|----------|----------|----------|------------|
| 4.0 | 450 | 47 | 22 | 34 | 引线式 |
| 15.0 | 250 | 57 | 32 | 46 | Down-lead |

接线图 Wiring Diagram



齿轮箱型式 Model of Gearbox: 5GU □ K

| 频率 Frequency | 减速比 Reduction Ratio | | 180 | 200 |
|--------------|-----------------------------|--------|------|------|
| 50Hz | 输出轴转速 Output Shaft Speed | r/min | 8 | 7.5 |
| | 允许力矩 Allowable Torque | N.m | 19.6 | 19.6 |
| | | kgf.cm | 200 | 200 |
| 60Hz | 输出轴转速 Output Shaft Speed | r/min | 10 | 9 |
| | 允许力矩 Allowable Torque | N.m | 19.6 | 19.6 |
| | | kgf.cm | 200 | 200 |